

**Notes:**

1. Do not scale drawing.
2. Right hand shown.
3. It is the door and frame manufacturers' responsibility to check the hardware schedule and prepare doors and frames.
4. Pivots drilled for 1/4-20 x 3/4" FHMS or #14 x 1-1/2" FHWS.
5. Suitable reinforcing by others.
6. Doors must be radiused. Radius is determined by pivot point to the frame, less 1/16" (1.6). On the 127-3/4, that is fixed at 1-1/4" (31.8). The 128-3/4 pivot point can be moved toward the lock edge.
7. 5/16" (7.9) min., 3/4" (19) max. clearance. If more clearance is needed, longer spindle is required.
8. All dimensions are in inches (mm).

**127-3/4 and 128-3/4 Pivot Set  
Floor and Jamb Mounted, Center Hung**

**RIXSON®**

**ASSA ABLOY**

www.rixson.com

TEMPLATE NUMBER

**IS-127-3/4 & IS-128-3/4**

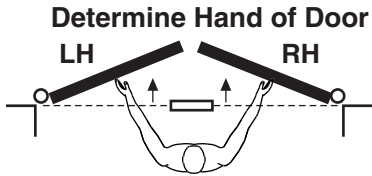
DATE

**12-11**

DO NOT SCALE DRAWINGS

# 127-3/4 & 128-3/4 Pivot Set

Center Hung



## Installation Instructions

### 1. LOCATE PIVOT

- A. Measure 1-5/16 (33.3) out from door jamb on centerline of door. This is the location of spindle center.
- B. Round heel edge and prepare door for 1/16 (1.6) MIN. Clearance thru entire opening.

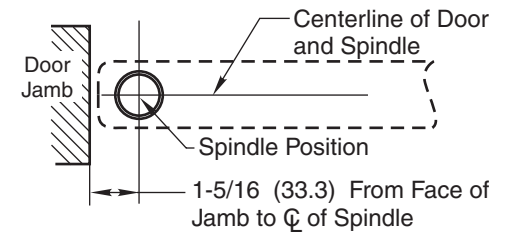
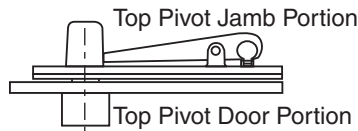


Figure 1

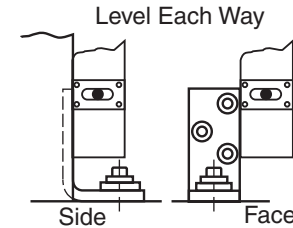


**IMPORTANT**  
Use plumb line to make sure that centerline of Top Pivot aligns with centerline of Bottom Spindle.

### 2. INSTALL PIVOT SET

NOTE: Care must be exercised to see that bottom pivot is level. Use levels per illustration.

- A. 127-3/4 Bottom Pivot Jamb Portion:  
Mortise jamb to receive jamb leaf of bottom pivot as shown on reverse side.
- B. 128-3/4 Bottom Pivot Floor Portion:  
(1) Locate floor portion.  
(2) Anchor portion securely to floor.



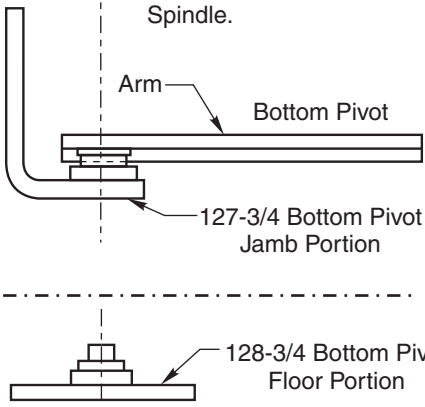
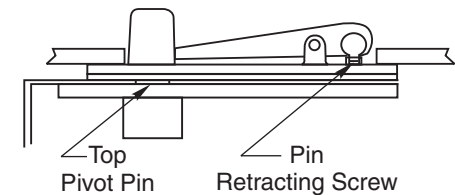
### 3. INSTALL TOP PIVOT AND PIVOT ARM.

- A. Install door portion of pivot per template.
- B. Install jamb portion of top pivot in frame per template.
- C. Centerline of pivot should align with centerline of bottom spindle. Use a plumb line to assure accuracy.
- D. Mortise bottom of door to receive arm (Mortise varies with required clearance refer to template.)

See Figure 1

### 4. HANG DOOR

Set arm, mortised in door, on pivot spindle and engage the top pivot pin by turning pin retracting screw clockwise.



### 5. DISMOUNT DOOR (IF REQUIRED)

Pull top of door out of opening, banking it toward you. Lift bottom of door off spindle at the floor.

## 127-3/4 and 128-3/4 Pivot Set Floor and Jamb Mounted, Center Hung

**RIXSON**

**ASSA ABLOY**

www.rixson.com

TEMPLATE NUMBER

**IS-127-3/4 & IS-128-3/4**

DATE

**12-11**