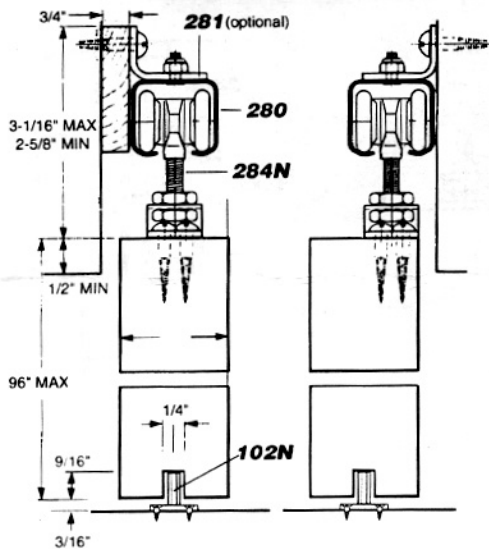
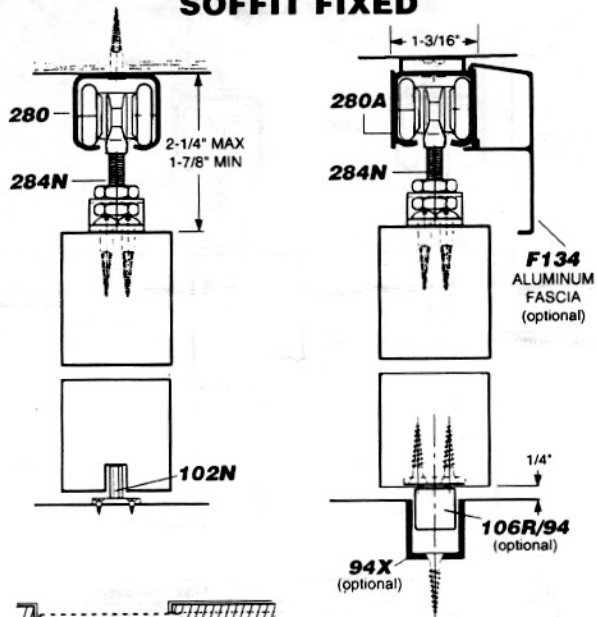


## FACE FIXED



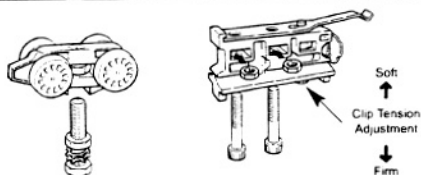
Kit No.	Material	Max leaf size
H100/6	steel track / 6 ft.	96" x 36" x 2"
H100/8	steel track / 8 ft.	96" x 48" x 2"
H100A/6	aluminum track / 6 ft.	96" x 36" x 2"
H100A/8	aluminum track / 8 ft.	96" x 48" x 2"

## SOFFIT FIXED

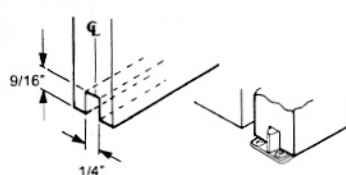


(A) Max Door Width	(L) Run
34"	72"
48"	96"

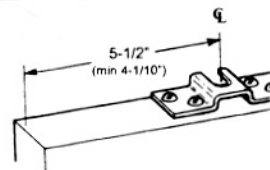
### 1 ASSEMBLY OF HANGER, RETAINING STOP & TRACK STOP



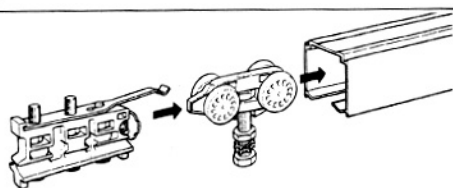
### 2 MORTISE DOOR & FIT DOOR GUIDE



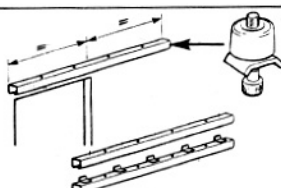
### 3 FIT HANGER APRON TO DOOR PANEL



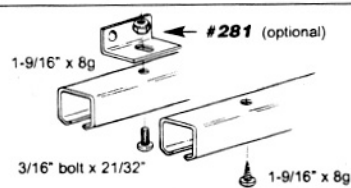
### 4 INSERT HANGERS AND RETAINING STOP



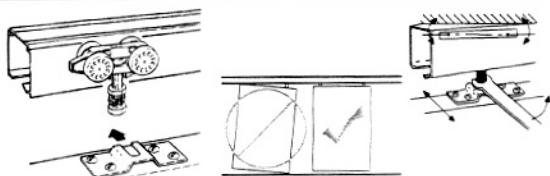
### 5 FIT TRACK STOP & SECURE TRACK



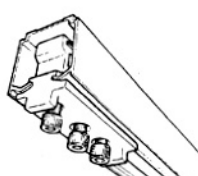
### 6 SECURE TRACK



### 7 ATTACH DOOR PANEL & ADJUST UNTIL LEVEL



### 8 POSITION & SECURE RETAINING STOP



### 9 ALTERNATIVE GUIDES

